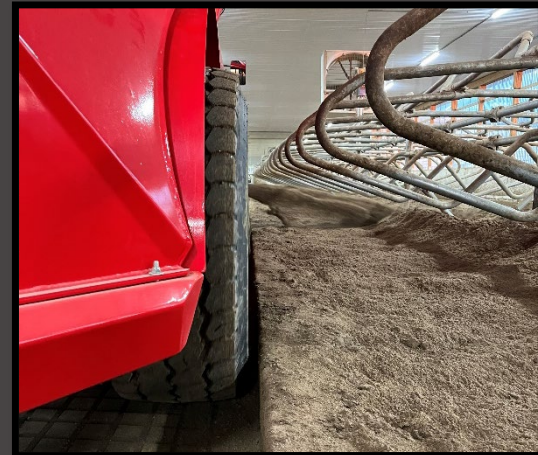






STATE OF THE ART TECHNOLOGY

- Same proven hydrostat drivetrain as our Self-Propelled Alley Vac!
- 7.1L Stage V CAT Engine
- Large diameter UHMW belt drive sprockets
- Grease for life bearings in the cross conveyor – same as our Lagoon Pumps
- User friendly controls of the conveyor
 - Thumb dial for conveyor speed
 - Joystick fwd/rev for conveyor tilt
- Hydraulic drive oil cooler
- AR400 box floor
- 5/8" G80 drive chain
- Wide floor with steep sides to prevent material bridging
- Operator friendly conveyor location for optimal visibility
- Oversized floor gearbox
- A/C standard
- Front walking suspension standard



MODELS

CAPACITY	WIDTH	HEIGHT	WHEELBASE	CIRCLE	ENGINE	TIRE SIZE
18 CY	8'-6"	10'	122"	11'	C7.1	445/65R22.5
22 CY	8'-6"	11'	146"	14'	C7.1	445/65R22.5

